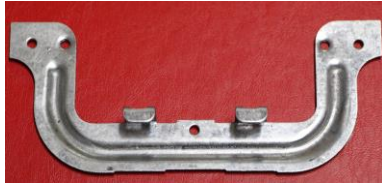




**DON GRAY ELECTRICAL SUPPLIES**  
Electrical Wholesalers and Manufacturers Agents  
312 PASCOE VALE RD, ESSENDON 3040  
ph 9 326 2223 fax 9 326 2191  
ABN 43 858 523 981

## **PLASTER / WALL BOARD BRACKETS**



### **PART NUMBER: 'PC'**

- **ONE GANG VERTICLE / HORIZONTAL MOUNTING**
- **ACCOMODATES UP TO 12mm THICK PLASTER OR HARDBOARD**
- **MOUNTS ALL SWITCHES, POWERPOINTS & ACCESSORIES WITH 84mm and 50mm MOUNTING CENTRES**
- **DIMENSIONS: 120 x 50mm**

### **PART NUMBER: 154/1**

- **AS ABOVE – ACCOMMODATES FROM 19mm to 25mm THICK BOARDS**

### **PART NUMBER: 712**

- **MOUNTING CLIP FOR 12mm THICK BOARD WITH MOUNTING CENTRES 153mm**



**DON GRAY ELECTRICAL SUPPLIES**  
**Electrical Wholesalers and Manufacturers Agents**  
**312 PASCOE VALE RD, ESSENDON 3040**  
**ph 9 326 2223 fax 9 326 2191**  
**ABN 43 858 523 981**